

# **Chagrin Valley Conference Cross Country Championship**

Saturday, October 12th, 2019

The Great Geauga County Fairgrounds

Chagrin/Valley Girls Varsity Race (Limit 7) 10:00 am

Chagrin/Valley Boys Varsity Race (Limit 7) 10:45 am

Chagrin/Valley Combined Open Race 11:30 am

## **Bus Drop Off/Pick Up and Parking - 14529 Claridon Troy Rd, Burton, 44021**

### **Follow Orange Arrows on Map, Park in Yellow Area**

For team drop off purposes, please have the buses enter the fairgrounds using the drive between the Berkshire Local School District and the Geauga County Extension Building, drop off team by ORANGE CIRCLE on map, follow pavement by overflow parking heading north, then exit the fairgrounds to Kent State for bus parking, 14111 Claridon Troy Rd. To pick up teams, please use the same route.

## **Spectator Parking - 14529 Claridon Troy Rd, Burton, 44021**

### **Parking in Green Areas on Map, follow directional black arrows**

Spectators will be parking on the asphalt midways of the Geauga County Fairgrounds. We ask that spectator vehicles enter the fairgrounds using the drive between the Berkshire Local School District and the Geauga County Extension Building. We ask that cars follow the directional black arrows and park their cars along the right sides of the midways facing the direction of the arrows. This will help with exiting the facility when the event is over.

Overflow parking can be found across the street from the Geauga County Extension Building, or north of the fairgrounds track.

## **Divisions**

### **Chagrin Division**

Beachwood

Chagrin Falls

Edgewood

Geneva

Harvey

Hawken

Lakeside

Orange

Perry

West Geauga

### **Valley Division**

Berkshire

Brooklyn

Cardinal

Cuyahoga Heights

Grand Valley

Independence

Kirtland

Lutheran West

Trinity

Wickliffe

## **Team Camps**

Please set up all team camps so that they do not interfere with the course. Please stick to the inside of the track, the best spot is on the track against the outside fence, or out in the race course area. Tents placed in the restricted areas will be asked to move.

## **Concessions**

Concessions and CVC T-Shirts will be for sale on the north side of the grandstands.

## **Awards**

First Place finisher in each division - MVP

Top finisher plus next 7 Runners in each division - 1st Team CVC

Runners 9-16 in each division - 2nd Team CVC

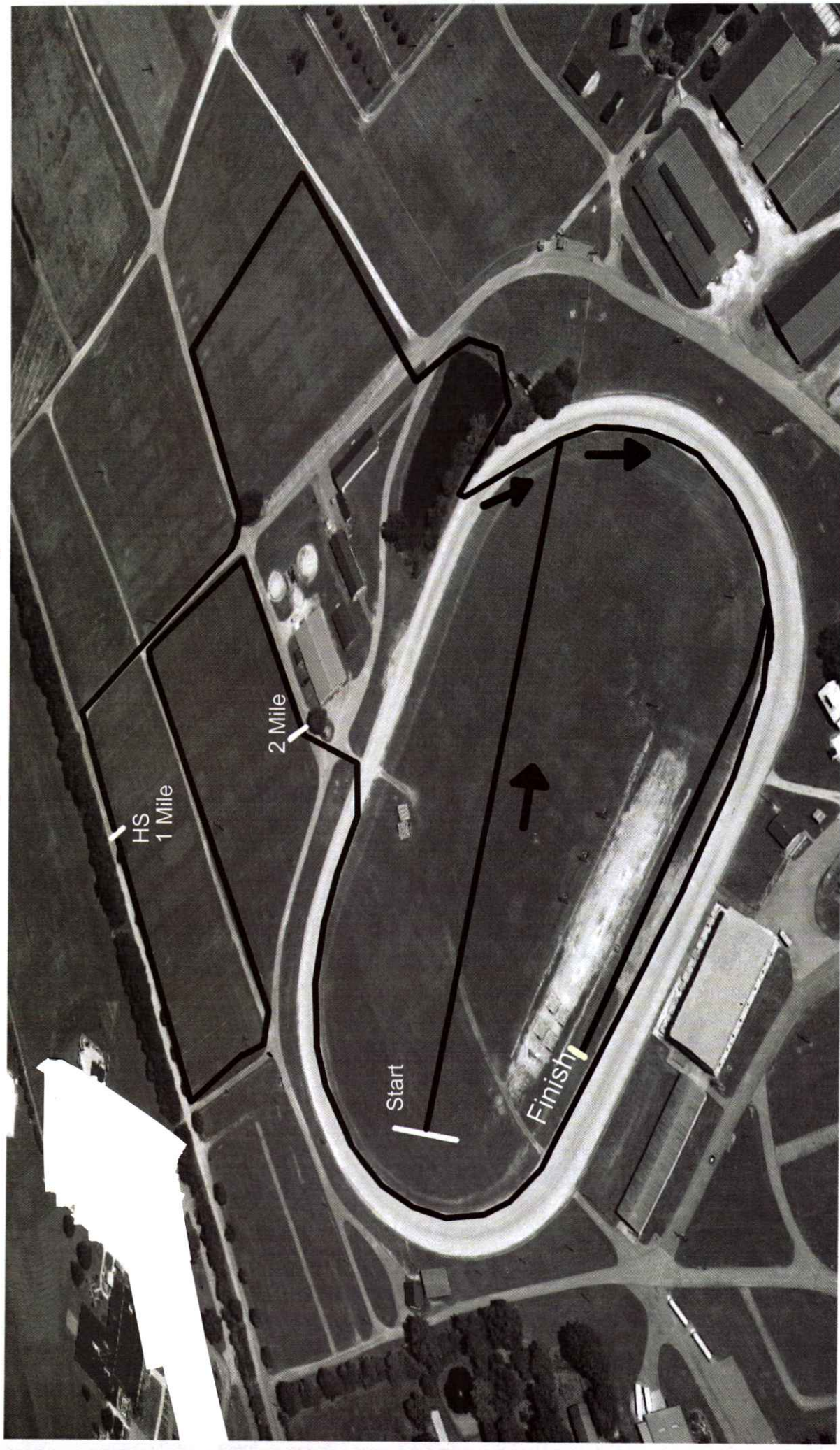
2 Honorable Mentions per team (someone who did not receive 1st or 2nd team recognition)

\*\*\*There will be a short coaches meeting at the conclusion of the open race to discuss results, make honorable mentions, and vote for Coach of the Year\*\*\*

## **Results**

Timing will be done by the Gopher A Run timing company ([www.gopherarun.com](http://www.gopherarun.com)). Results will be posted at the meet near the concessions and awards area as soon as possible. Results will be posted to Baumspage as soon as possible once the meet has concluded. No bibs are being used by runners and all timing and placing will be from chips worn by athletes on their shoe. Athletes must drop their chip in one of the buckets in the finishing chute before leaving the area. PLEASE DO NOT LEAVE THE MEET WITH ANY CHIPS OR YOUR TIME WILL BY FINED BY THE TIMING COMPANY FOR THE MISSING CHIP

# CVC Championship Course



Course is 2 laps for 5000m

Kent State University  
Geauga Campus

Bus

Oraflu

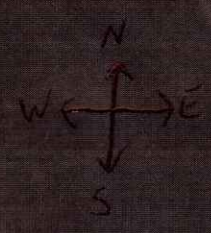
131

Christian Academy

Berkshire Local School District

Oraflu  
Geauga County Extension

Claridon Troy Rd



The Great Geauga County Fair

Rich Bradshaw Training Stable

Berkshire Ln → Google ← PARKING